



W2: Huebner Creek – Eckhert to Bandera
Solicitation Number: CO-00420
Job No.: 15-4513

ADDENDUM 3
April 27, 2021

To Respondent of Record:

This addendum, applicable to work referenced above, is an amendment to the price proposal, plans and specifications and as such will be a part of and included in the Contract Documents. Acknowledge receipt of this addendum by entering the Addendum number and issue date on the space provided in submitted copies of the price proposal.

RESPONSES TO QUESTIONS

Q1: I've been through the plans 3 times & I can't find (3) three of the (11) eleven 4' FRP sanitary manholes (bid item # 26). I've got manholes A 1- A 28 (28), B 1 – M 1 (13) for a total of 41, but the bid quantity is 44 for FRP manholes.

Response: *The Price Proposal and Plans have been updated to revise the manhole quantities to clarify the location and use of doghouse manholes throughout the plan and profile sheets.*

Sheet G5 has been updated with quantities for doghouse manholes by including a new line item for 852A Sanitary Sewer Doghouse Manhole. Sheet C17 included an additional manhole that was not required. Sheets C16, C18, and C31 have their quantity boxes revised to include 852A Sanitary Sewer Doghouse Manholes.

Price Proposal has been updated to include line item 26: 852A Sanitary Sewer Doghouse Manhole. Line Item 27: 852A Sanitary Sewer Manhole, 853A Fiber-Reinforced Sanitary Sewer Manhole – 4' Diameter Fiberglass Manhole, had its quantity reduced by moving the doghouse manholes to line item 26.

Refer to the "Changes to Specifications" item number 1 and "Changes to Plans" item number 1 within this Addendum.

CHANGES TO SPECIFICATIONS

1. Price Proposal, remove in its entirety and replace with the revised version attached to the Addendum. Respondents should use this version when submitting a proposal for this project. Failure to use this version could result in the Respondent's proposal being found non-responsive.

CHANGES TO PLANS

1. Remove sheets G5, C16, C17, C18, and C31 in their entirety and replace with sheet G5, C16, C17, C18, and C31 attached in this addendum.

END OF ADDENDUM 3

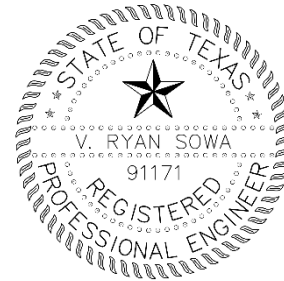
This Addendum is 15 pages in its entirety, including attachments.

Attachments:

- Price Proposal Form (8 pages)
- Plan Sheets G5, C16, C17, C18, and C31 (5 sheets)



V. Ryan Sowa, P.E.
Kimley-Horn and Associates, Inc.



PRICE PROPOSAL

PROPOSAL OF _____, a corporation
a partnership consisting of _____
an individual doing business as _____

THE SAN ANTONIO WATER SYSTEM:

Pursuant to Instructions and Invitation for Competitive Sealed Proposals, the undersigned proposes to furnish all labor and materials as specified and perform the work required for the project as specified, in accordance with the Plans and Specifications for the following prices in the bid proposal to wit:

PLEASE SEE ATTACHED LIST OF BID ITEMS.

RESPONDENT'S SIGNATURE & TITLE

FIRM'S NAME (TYPE OR PRINT)

FIRM'S ADDRESS

FIRM'S PHONE NO. /FAX NO.

FIRM'S EMAIL ADDRESS

The Contractor herein acknowledges receipt of the following:
Addendum Nos. _____

OWNER RESERVES THE RIGHT TO ACCEPT THE OVERALL MOST RESPONSIBLE PROPOSAL.

The Respondent offers to construct the Project in accordance with the Contract Documents for the contract price, and to complete the Project within **450** calendar days after the start date, as set forth in the Authorization to Proceed. **The Respondent understands and accepts the provisions of the contract Documents relating to liquidated damages of the project if not completed on time.**

Complete the additional requirements of the Proposal which are included on the following pages.

Statement on President's Executive Orders

Has your firm previously performed work subject to the President's Executive Orders Numbers 11246 and 11375 or any preceding similar executive orders (Numbers 10925 and 11114)?

Yes No

LINE NO.	ITEM NO.	ITEM DESCRIPTION	QUANTITY	UNIT	UNIT PRICE	TOTAL PRICE
1	103.3	REMOVE SIDEWALKS AND DRIVEWAYS	1,700	SF	\$	\$
2	413.1	FLOWABLE FILL (LOW STRENGTH)	3,025	CY	\$	\$
3	503.2	PORTLAND CEMENT CONCRETE DRIVEWAY - COMMERCIAL	189	SY	\$	\$
4	505	CONCRETE RIPRAP (5" THICK)	122	SY	\$	\$
5	508.1	RELOCATING WIRE FENCE	60	LF	\$	\$
6	520.1	HYDROMULCHING (RESIDENTIAL OR COMMERCIAL)	89,648	SY	\$	\$
7	530.1	BARRICADES, SIGNS AND TRAFFIC HANDLING	1	LS	\$	\$
8	540	STORM WATER POLLUTION PREVENTION PLAN	1	LS	\$	\$
9	550.1	TRENCH EXCAVATION SAFETY PROTECTION	8,415	LF	\$	\$
10	848A	6-INCH SDR-26 (ASTM D-3034) PVC SANITARY SEWER LINE (6' TO 10')	54	LF	\$	\$
11	848A	8-INCH SDR-26 (ASTM D-3034) PVC SANITARY SEWER LINE (6' TO 10')	34	LF	\$	\$
12	848A	8-INCH SDR-26 (ASTM D-3034) PVC SANITARY SEWER LINE (10' TO 14')	291	LF	\$	\$
13	848A	8-INCH SDR-26 (ASTM D-3034) PVC SANITARY SEWER LINE (14' TO 18')	27	LF	\$	\$
14	848A	8-INCH SDR-26 (ASTM D-3034) PVC SANITARY SEWER LINE (18' TO 22')	31	LF	\$	\$
15	848A	10-INCH SDR-26 (ASTM D-3034) PVC SANITARY SEWER LINE (6' TO 10')	59	LF	\$	\$
16	848A	12-INCH SDR-26 (ASTM D-3034) PVC SANITARY SEWER LINE (6' TO 10')	215	LF	\$	\$
17	848A	12-INCH SDR-26 (ASTM D-3034) PVC SANITARY SEWER LINE (10' TO 14')	12	LF	\$	\$

18	848A	12-INCH SDR-26 (ASTM D-3034) PVC SANITARY SEWER LINE (14' TO 18')	57	LF	\$	\$
19	848A	12-INCH SDR-26 (ASTM D-3034) PVC SANITARY SEWER LINE (18' TO 22')	27	LF	\$	\$
20	848A	12-INCH SDR-26 (ASTM D-3034) PVC SANITARY SEWER LINE (22' TO 25')	8	LF	\$	\$
21	848A	24-INCH SDR-26 (ASTM F-679) PVC SANITARY SEWER LINE (6' TO 10')	91	LF	\$	\$
22	848A	24-INCH SDR-26 (ASTM F-679) PVC SANITARY SEWER LINE (10' TO 14')	520	LF	\$	\$
23	848A	24-INCH SDR-26 (ASTM F-679) PVC SANITARY SEWER LINE (14' TO 18')	1,903	LF	\$	\$
24	848A	24-INCH SDR-26 (ASTM F-679) PVC SANITARY SEWER LINE (18' TO 22')	48	LF	\$	\$
25	848B	SANITARY SEWERS - PIPE TESTING AND ACCEPTANCE	3,377	LF	\$	\$
26	852A	SANITARY SEWER DOGHOUSE MANHOLE	3	EA	\$	\$
27	852A 853A	SANITARY SEWER MANHOLE FIBER-REINFORCED SANITARY SEWER MANHOLE - 4' DIAMETER FIBERGLASS MANHOLE	8	EA	\$	\$
28	852A 853A	SANITARY SEWER DROP MANHOLE FIBER-REINFORCED SANITARY SEWER MANHOLE - 4' DIAMETER FIBERGLASS MANHOLE W/ DROP	13	EA	\$	\$
29	852A 853A	EXTRA DEPTH MANHOLE (>6') FIBER-REINFORCED SANITARY SEWER MANHOLE - 4' DIAMETER FIBERGLASS MANHOLE, EXTRA DEPTH (>6')	45	VF	\$	\$

30	852A 853A	EXTRA DEPTH DROP MANHOLE (>6') FIBER-REINFORCED SANITARY SEWER MANHOLE - 4' DIAMETER FIBERGLASS MANHOLE W/ DROP, EXTRA DEPTH (>6')	119	VF	\$	\$
31	852B 853B	SANITARY SEWER MANHOLES - MANHOLE TESTING AND ACCEPTANCE FIBER-REINFORCED SANITARY SEWER MANHOLE - 4' DIAMETER FIBERGLASS MAHOLE TESTING AND ACCEPTANCE	21	EA	\$	\$
32	853A SP850	FIBER-REINFORCE SANITARY SEWER MANHOLE – 6' DIAMETER FIBERGLASS MANHOLE OR POLYMER CONCRETE SANITARY SEWER STRUCTURE - 6' DIAMETER	5	EA	\$	\$
33	853A	FIBER-REINFORCED SANITARY SEWER MANHOLE - 6' DIAMETER FIBERGLASS MANHOLE, EXTRA DEPTH (>6')	89	VF	\$	\$
34	853A SP850	FIBER-REINFORCED SANITARY SEWER MANHOLE - TEE BASE FIBERGLASS MANHOLE, MITER OR POLYMER CONCRETE SANITARY SEWER STRUCTURE - 6' DIAMETER	7	EA	\$	\$
35	853A	FIBER-REINFORCED SANITARY SEWER MANHOLE - TEE BASE FIBERGLASS MANHOLE, MITER, EXTRA DEPTH (>6')	107	VF	\$	\$

36	853A SP850	FIBER-REINFORCED SANITARY SEWER MANHOLE - TEE BASE FIBERGLASS MANHOLE, MITER W/ DROP OR POLYMER CONCRETE SANITARY SEWER STRUCTURE - 6' DIAMETER	9	EA	\$	\$
37	853A	FIBER-REINFORCED SANITARY SEWER MANHOLE - TEE BASE FIBERGLASS MANHOLE, MITER W/ DROP, EXTRA DEPTH (>6')	138	VF	\$	\$
38	853B	FIBER-REINFORCED SANITARY SEWER MANHOLES - MANHOLE TESTING AND ACCEPTANCE	21	EA	\$	\$
39	857A	36-INCH FRP (ASTM D- 3262) (PS 72) SANITARY SEWER LINE (14' TO 18')	1,640	LF	\$	\$
40	857A	36-INCH FRP (ASTM D- 3262) (PS 72) SANITARY SEWER LINE (18' TO 22')	1,168	LF	\$	\$
41	857A	36-INCH FRP (ASTM D- 3262) (PS 72) SANITARY SEWER LINE (22' TO 25')	50	LF	\$	\$
42	857A	42-INCH FRP (ASTM D- 3262) (PS 72) SANITARY SEWER LINE (18' TO 22')	1,101	LF	\$	\$
43	857A	42-INCH FRP (ASTM D- 3262) (PS 72) SANITARY SEWER LINE (22' TO 25')	826	LF	\$	\$
44	857A	42-INCH FRP (ASTM D- 3262) (PS 72) SANITARY SEWER LINE (25' TO 30')	235	LF	\$	\$
45	857B	FIBERGLASS REINFORCED PIPE FOR LARGE DIAMETER GRAVITY SEWER: PIPE TESTING AND ACCEPTANCE	5,020	LF	\$	\$
46	02314 02341 02345	JACKING, BORING OR TUNNELING (24")	306	LF	\$	\$
47	02314 02341 02345	JACKING, BORING OR TUNNELING (54")	545	LF	\$	\$
48	02314 02341 02345	JACKING, BORING OR TUNNELING (60")	2,755	LF	\$	\$

49	02349	CARRIER PIPE FOR JACKING, BORING OR TUNNELING (8" PVC SDR26 PVC GRAVITY SEWER CARRIER PIPE IN TUNNEL)	159	LF	\$	\$
50	02349	CARRIER PIPE FOR JACKING, BORING OR TUNNELING (12" PVC SDR26 PVC GRAVITY SEWER CARRIER PIPE) (OPEN CUT)	165	LF	\$	\$
51	02349	CARRIER PIPE FOR JACKING, BORING OR TUNNELING (36" PS 72 FRP GRAVITY SEWER CARRIER PIPE IN TUNNEL)	545	LF	\$	\$
52	02349	CARRIER PIPE FOR JACKING, BORING OR TUNNELING (42" FRP GRAVITY SEWER CARRIER PIPE IN TUNNEL)	2,755	LF	\$	\$
53	02610	STEEL CASING (.375" THICK) 24" (6", 8", 10", 12" PVC)	306	LF	\$	\$
54	02610	STEEL CASING (.375" THICK) 24" (6", 8", 10", 12" PVC) (OPEN CUT)	18	LF	\$	\$
55	02610	STEEL CASING (0.5" THICK) 54" OR LINER PLATE 56" (36"FRP)	545	LF	\$	\$
56	02610	STEEL CASING (0.5" THICK) 60" OR LINER PLATE 62" (42"FRP)	2,755	LF	\$	\$
57	858	CONCRETE ENCASMENT, CRADLES, SADDLES, AND COLLARS	23	CY	\$	\$
58	862.2	ABANDONMENT OF SANITARY SEWER MAIN (6-INCH SANITARY SEWER LINE)	60	LF	\$	\$
59	862.2	ABANDONMENT OF SANITARY SEWER MAIN (8-INCH SANITARY SEWER LINE)	310	LF	\$	\$
60	862.2	ABANDONMENT OF SANITARY SEWER MAIN (10-INCH SANITARY SEWER LINE)	136	LF	\$	\$

61	862.2	ABANDONMENT OF SANITARY SEWER MAIN (21-INCH SANITARY SEWER LINE)	2,663	LF	\$	\$
62	862.2	ABANDONMENT OF SANITARY SEWER MAIN (24-INCH SANITARY SEWER LINE)	7,357	LF	\$	\$
63	864-S1	BYPASS PUMPING (SMALL DIAMETER SANITARY SEWERS)	1	LS	\$	\$
64	864-S2	BYPASS PUMPING (LARGE DIAMETER SANITARY SEWERS)	1	LS	\$	\$
65	866A	EXISTING SEWER MAIN PRE TELEVISION INSPECTION	15,135	LF	\$	\$
66	866	SEWER MAIN POST TELEVISION INSPECTION (8" THROUGH 15")	1,028	LF	\$	\$
67	866	SEWER MAIN POST TELEVISION INSPECTION (18" THROUGH 24")	2,561	LF	\$	\$
68	866	SEWER MAIN POST TELEVISION INSPECTION (30" OR GREATER)	8,320	LF	\$	\$
69	SP820 A	CSC PIPE JOINT INSPECTION	4	EA	\$	\$
70	SP820 B	CSC PIPE JOINT WELD	4	EA	\$	\$

SUBTOTAL (LINES 1 - 70)						\$
-------------------------	--	--	--	--	--	----

LINE NO.	ITEM NO.	ITEM DESCRIPTION	QUANTITY	UNIT	UNIT PRICE	TOTAL PRICE
71	100.1	MOBILIZATION (MAX 10% OF ITEMS 1 TO 70)	1	LS	\$	\$
72	100	INTERMEDIATE DEMOBILIZATION BYPASS EQUIPMENT RENTAL	20	MD	\$	\$
73	100	INTERMEDIATE DEMOBILIZATION BYPASS PUMPING FUEL	20	MD	\$	\$
74	100	INTERMEDIATE DEMOBILIZATION BYPASS WATCH	20	MD	\$	\$
75	SP100 A	INTERMEDIATE DEMOBILIZATION/REMOBILIZATION (OPEN CUT)	2	EA	\$	\$
76	SP100 B	INTERMEDIATE DEMOBILIZATION/REMOBILIZATION (TRENCHLESS)	2	EA	\$	\$
77	101.1	PREPARATION OF RIGHT-OF-WAY (MAX 5% OF ITEMS 1 TO 70)	1	LS	\$	\$

***Note: "MD" stands for "Man Days"**

SUBTOTAL (LINES 71 - 77)	\$
--------------------------	----


Mobilization and Prep of ROW shall be limited to the maximum percentage shown. **If the percentage exceeds the allowable maximum stated for mobilization and or preparation of ROW, SAWS reserves the right to cap the amount at the percentages shown and adjust the extensions of the bid items accordingly.**

TOTAL BID PRICE (TO INCLUDE LINE ITEMS 1 - 70 AND 71-77)	\$
---	----

General Sanitary Sewer Quantities

ITEM NO.	DESCRIPTION	UNIT	QUANTITY
103.3	REMOVE SIDEWALKS AND DRIVEWAYS	SF	1,700
413.1	FLOWABLE FILL (LOW STRENGTH)	CY	3,025
503.2	PORTLAND CEMENT CONCRETE DRIVEWAY - COMMERCIAL	SY	189
505	CONCRETE RIPRAP (5' THICK)	SY	122
508.1	RELOCATING WIRE FENCE	LF	60
520.1	HYDROMULCHING (RESIDENTIAL OR COMMERCIAL)	SY	89,648
530.1	BARRICADES, SIGNS AND TRAFFIC HANDLING	LS	1
540	STORM WATER POLLUTION PREVENTION PLAN	LS	1
550.1	TRENCH EXCAVATION SAFETY PROTECTION	LF	8,415
848A	6-INCH SDR-26 (ASTM D-3034) PVC SANITARY SEWER LINE (6' TO 10')	LF	54
848A	8-INCH SDR-26 (ASTM D-3034) PVC SANITARY SEWER LINE (6' TO 10')	LF	34
848A	8-INCH SDR-26 (ASTM D-3034) PVC SANITARY SEWER LINE (10' TO 14')	LF	291
848A	8-INCH SDR-26 (ASTM D-3034) PVC SANITARY SEWER LINE (14' TO 18')	LF	27
848A	8-INCH SDR-26 (ASTM D-3034) PVC SANITARY SEWER LINE (18' TO 22')	LF	31
848A	10-INCH SDR-26 (ASTM D-3034) PVC SANITARY SEWER LINE (6' TO 10')	LF	59
848A	12-INCH SDR-26 (ASTM D-3034) PVC SANITARY SEWER LINE (6' TO 10')	LF	215
848A	12-INCH SDR-26 (ASTM D-3034) PVC SANITARY SEWER LINE (10' TO 14')	LF	12
848A	12-INCH SDR-26 (ASTM D-3034) PVC SANITARY SEWER LINE (14' TO 18')	LF	57
848A	12-INCH SDR-26 (ASTM D-3034) PVC SANITARY SEWER LINE (18' TO 22')	LF	27
848A	12-INCH SDR-26 (ASTM D-3034) PVC SANITARY SEWER LINE (22' TO 25')	LF	8
848A	24-INCH SDR-26 (ASTM F-679) PVC SANITARY SEWER LINE (6' TO 10')	LF	91
848A	24-INCH SDR-26 (ASTM F-679) PVC SANITARY SEWER LINE (10' TO 14')	LF	520
848A	24-INCH SDR-26 (ASTM F-679) PVC SANITARY SEWER LINE (14' TO 18')	LF	1,903
848A	24-INCH SDR-26 (ASTM F-679) PVC SANITARY SEWER LINE (18' TO 22')	LF	48
848B	SANITARY SEWERS - PIPE TESTING AND ACCEPTANCE	LF	3,377
852A	SANITARY SEWER DOGHOUSE MANHOLE	EA	3
852A	SANITARY SEWER MANHOLE - 4' DIAMETER FIBERGLASS MANHOLE	EA	8
852A	SANITARY SEWER DROP MANHOLE	EA	13
853A	FIBER-REINFORCED SANITARY SEWER MANHOLE - 4' DIAMETER FIBERGLASS MANHOLE W/ DROP	EA	45
852A	EXTRA DEPTH MANHOLE (>6')	VF	119
853A	FIBER-REINFORCED SANITARY SEWER MANHOLE - 4' DIAMETER FIBERGLASS MANHOLE, EXTRA DEPTH (>6')	VF	21
852B	SANITARY SEWER MANHOLES - MANHOLE TESTING AND ACCEPTANCE	EA	5
853B	FIBER-REINFORCED SANITARY SEWER MANHOLE - 4' DIAMETER FIBERGLASS MAHOLE TESTING AND ACCEPTANCE	EA	89
853A	FIBER-REINFORCE SANITARY SEWER MANHOLE - 6' DIAMETER FIBERGLASS MANHOLE OR	EA	7
SP850	POLYMER CONCRETE SANITARY SEWER STRUCTURE - 6' DIAMETER	EA	107
853A	FIBER-REINFORCED SANITARY SEWER MANHOLE - 6' DIAMETER FIBERGLASS MANHOLE, EXTRA DEPTH (>6')	VF	9
853A	FIBER-REINFORCED SANITARY SEWER MANHOLE - TEE BASE FIBERGLASS MANHOLE, MITER OR	EA	158
SP850	POLYMER CONCRETE SANITARY SEWER STRUCTURE - 6' DIAMETER	EA	21
853A	FIBER-REINFORCED SANITARY SEWER MANHOLE - TEE BASE FIBERGLASS MANHOLE, MITER W/ DROP OR	EA	1,640
SP850	POLYMER CONCRETE SANITARY SEWER STRUCTURE - 6' DIAMETER	EA	1,168
853A	FIBER-REINFORCED SANITARY SEWER MANHOLE - TEE BASE FIBERGLASS MANHOLE, MITER W/ DROP, EXTRA DEPTH (>6')	VF	50
853B	FIBER-REINFORCED SANITARY SEWER MANHOLES - MANHOLE TESTING AND ACCEPTANCE	EA	1,101
857A	36-INCH FRP (ASTM D-3262) (PS 72) SANITARY SEWER LINE (14' TO 18')	LF	826
857A	36-INCH FRP (ASTM D-3262) (PS 72) SANITARY SEWER LINE (18' TO 22')	LF	235
857A	36-INCH FRP (ASTM D-3262) (PS 72) SANITARY SEWER LINE (22' TO 25')	LF	5,020
857A	42-INCH FRP (ASTM D-3262) (PS 72) SANITARY SEWER LINE (18' TO 22')	LF	
857A	42-INCH FRP (ASTM D-3262) (PS 72) SANITARY SEWER LINE (22' TO 25')	LF	
857A	42-INCH FRP (ASTM D-3262) (PS 72) SANITARY SEWER LINE (25' TO 30')	LF	
857B	FIBERGLASS REINFORCED PIPE FOR LARGE DIAMETER GRAVITY SEWER: PIPE TESTING AND ACCEPTANCE	LF	

TOTAL ESTIMATED QUANTITIES			
ITEM NO.	DESCRIPTION	UNIT	QUANTITY
02314	JACKING, BORING OR TUNNELING (24')	LF	306
02341	JACKING, BORING OR TUNNELING (54')	LF	545
02345	JACKING, BORING OR TUNNELING (60')	LF	2755
02349	CARRIER PIPE FOR JACKING, BORING OR TUNNELING (8" PVC SDR26 PVC GRAVITY SEWER CARRIER PIPE IN TUNNEL)	LF	159
02349	CARRIER PIPE FOR JACKING, BORING OR TUNNELING (12" PVC SDR26 PVC GRAVITY SEWER CARRIER PIPE) (OPEN CUT)	LF	165
02349	CARRIER PIPE FOR JACKING, BORING OR TUNNELING (36" PS 72 FRP GRAVITY SEWER CARRIER PIPE IN TUNNEL)	LF	545
02349	CARRIER PIPE FOR JACKING, BORING OR TUNNELING (42" FRP GRAVITY SEWER CARRIER PIPE IN TUNNEL)	LF	2755
02610	STEEL CASING (.375" THICK) 24" (6", 8", 10", 12" PVC)	LF	306
02610	STEEL CASING (.375" THICK) 24" (6", 8", 10", 12" PVC) (OPEN CUT)	LF	18
02610	STEEL CASING (0.5" THICK) 54" OR LINER PLATE 56" (36"FRP)	LF	545
02610	STEEL CASING (0.5" THICK) 60" OR LINER PLATE 62" (42"FRP)	LF	2755
858	CONCRETE ENCASUREMENT, CRADLES, SADDLES, AND COLLARS	CY	23
862.2	ABANDONMENT OF SANITARY SEWER MAIN (6-INCH SANITARY SEWER LINE)	LF	60
862.2	ABANDONMENT OF SANITARY SEWER MAIN (8-INCH SANITARY SEWER LINE)	LF	310
862.2	ABANDONMENT OF SANITARY SEWER MAIN (10-INCH SANITARY SEWER LINE)	LF	136
862.2	ABANDONMENT OF SANITARY SEWER MAIN (21-INCH SANITARY SEWER LINE)	LF	2663
862.2	ABANDONMENT OF SANITARY SEWER MAIN (24-INCH SANITARY SEWER LINE)	LF	7357
864-S1	BYPASS PUMPING (SMALL DIAMETER SANITARY SEWERS)	LS	1
864-S2	BYPASS PUMPING (LARGE DIAMETER SANITARY SEWERS)	LS	1
866A	EXISTING SEWER MAIN PRE TELEVISION INSPECTION	LF	15135
866	SEWER MAIN POST TELEVISION INSPECTION (6" THROUGH 15")	LF	1028
866	SEWER MAIN POST TELEVISION INSPECTION (18" THROUGH 24")	LF	2561
866	SEWER MAIN POST TELEVISION INSPECTION (30" OR GREATER)	LF	8320
SP820A	CSC PIPE JOINT INSPECTION	EA	4
SP820B	CSC PIPE JOINT WELD	EA	4
100.1	MOBILIZATION (MAX 10% OF ITEMS 1 TO 69)	LS	1
100	INTERMEDIATE DEMOBILIZATION BYPASS EQUIPMENT RENTAL	MD	20
100	INTERMEDIATE DEMOBILIZATION BYPASS PUMPING FUEL	MD	20
100	INTERMEDIATE DEMOBILIZATION BYPASS WATCH	MD	20
SP100A	INTERMEDIATE DEMOBILIZATION/REMOBILIZATION (OPEN CUT)	EA	2
SP100B	INTERMEDIATE DEMOBILIZATION/REMOBILIZATION (TRENCHLESS)	EA	2
101.1	PREPARATION OF RIGHT-OF-WAY (MAX 5% OF ITEMS 1 TO 69)	LS	1




03/18/2021

Kimley»Horn

Texas Registered Firm, No. 928
 601 NW Loop 410 Suite 350 San Antonio, TX 78216
 Tel No. 210-541-9166 Fax No. 210-541-8699

No.	Revision	By	Date
▲	ADDENDUM #1	VRS	03/12/2021
▲	ADDENDUM #3	VRS	04/27/2021



SAN ANTONIO WATER SYSTEM

W2 HUEBNER CREEK: ECKHERT TO BANDERA

SHEET

OVERALL QUANTITIES

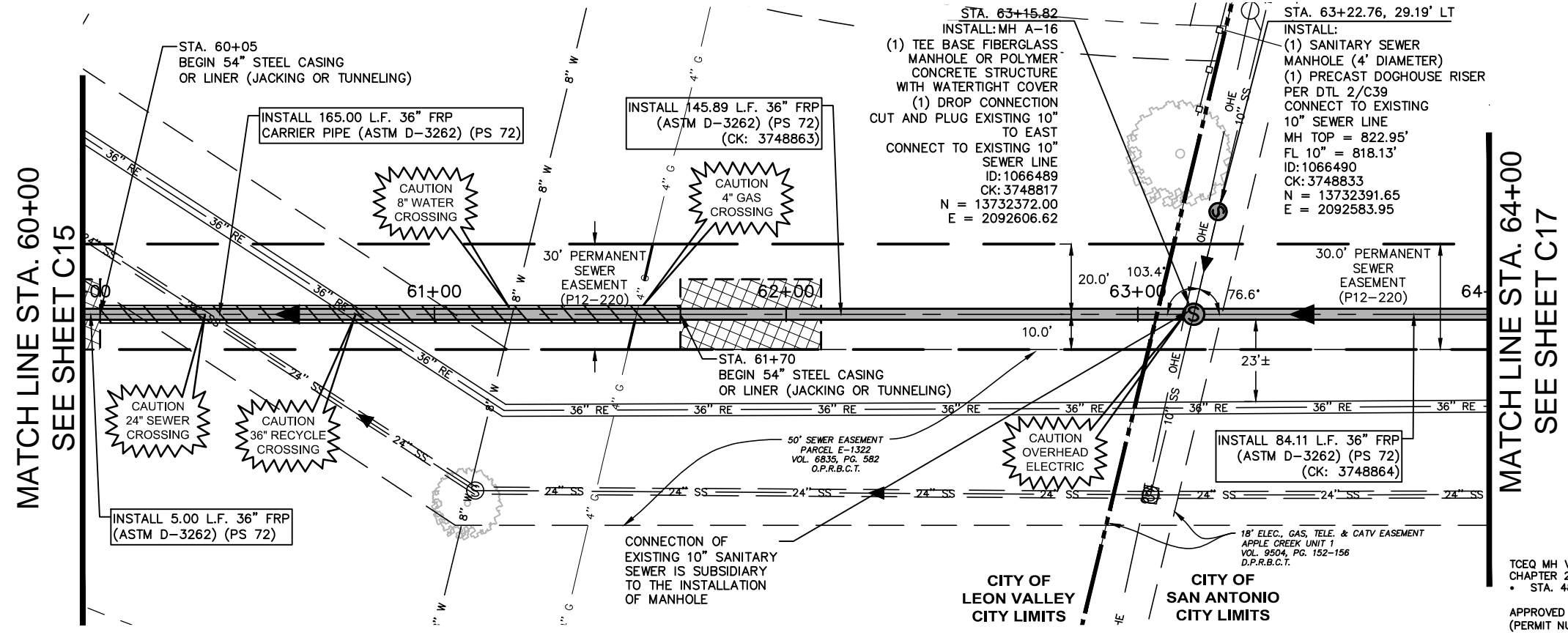
DATE: MARCH 2021	SAWS PROJECT NO.	G5
DESIGN: VRS	15-4513	
DRAWN: RKC	KHA PROJECT NO.	
CHECKED: JAF	068665009	

K:\SNA_Utilities\068665009\CAD\SHEETS\G3_GenNotes.dwg



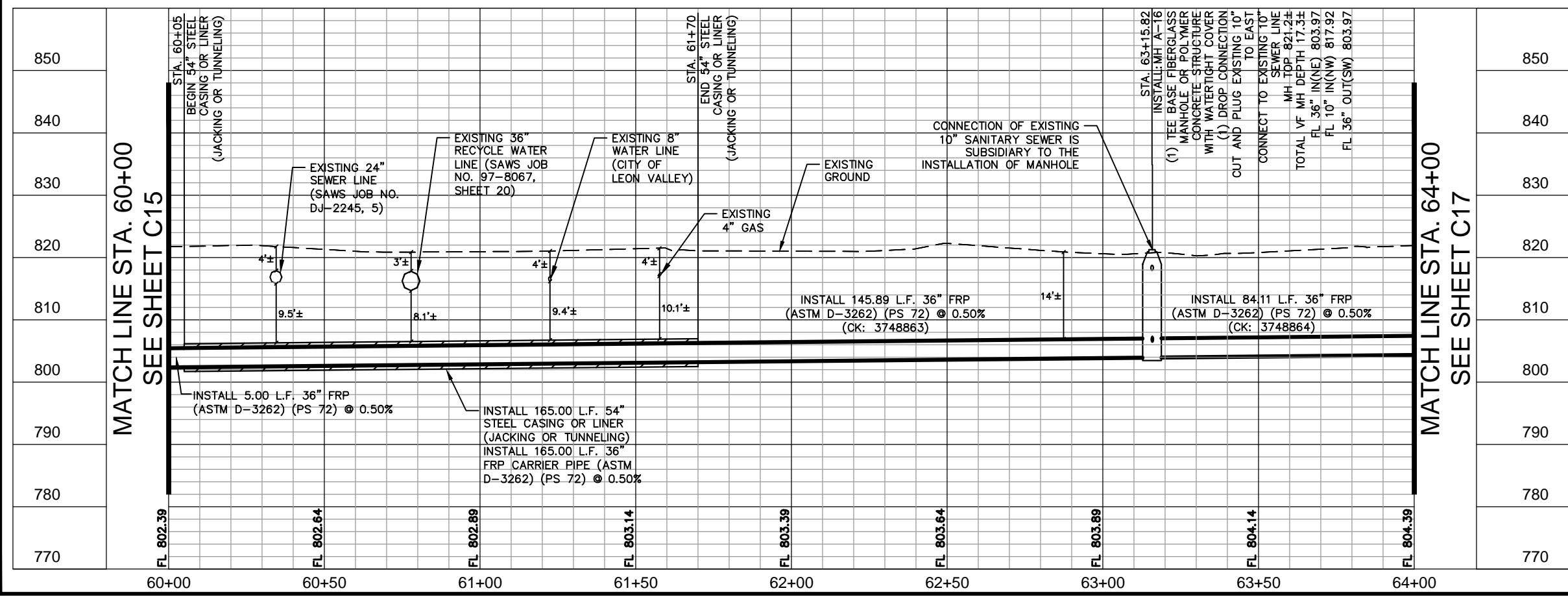
GRAPHIC SCALE 20'
FULL SIZE 1" = 20'
HALF SIZE 1" = 40'

ENTIRE SEGMENT ON THIS SHEET WITHIN 100-YR FLOODPLAIN



ESTIMATED QUANTITIES			
ITEM NO.	DESCRIPTION	UNIT	QUANTITY
413.1	FLOWABLE FILL (LOW STRENGTH)	CY	92
550.1	TRENCH EXCAVATION SAFETY PROTECTION	LF	235
852A	SANITARY SEWER DOGHOUSE MANHOLE	EA	1
853A SP850	FIBER-REINFORCED SANITARY SEWER MANHOLE - TEE BASE FIBERGLASS MANHOLE, MITER W/ DROP OR POLYMER CONCRETE SANITARY SEWER STRUCTURE - 6' DIAMETER	EA	1
853A	FIBER-REINFORCED SANITARY SEWER MANHOLE - TEE BASE FIBERGLASS MANHOLE, MITER W/ DROP, EXTRA DEPTH (>6')	VF	12
857A	36-INCH FRP (ASTM D-3262) (PS 72) SANITARY SEWER LINE (14' TO 18')	LF	205
857A	36-INCH FRP (ASTM D-3262) (PS 72) SANITARY SEWER LINE (18' TO 22')	LF	30
02314	JACKING, BORING OR TUNNELING (54')	LF	165
02349	CARRIER PIPE FOR JACKING, BORING OR TUNNELING (36" PS 72 FRP GRAVITY SEWER CARRIER PIPE IN TUNNEL)	LF	165
02610	STEEL CASING (0.5" THICK) 54" OR LINER PLATE 56" (36"FRP)	LF	165

TCEQ MH VENT SPACING VARIANCE PER CHAPTER 217.55
• STA. 48+52 TO 74+11
APPROVED BY SAWS ON 10/16/2018
(PERMIT NUMBER: WQ0010137003)



LEGEND		FULL SIZE (22" x 34") 1" = 10' VERTICAL	HALF SIZE (11" x 17") 1" = 20' VERTICAL
PROPERTY LINE	---	---	---
EXISTING SAN. SWR.	8" SS	8" SS	8" SS
EXISTING RECYCLE MAIN	36" RE	36" RE	36" RE
EXISTING OVERHEAD ELEC. LINE & PP	OHE	OHE	OHE
EXISTING UNDERGROUND ELEC. LINE	UGE	UGE	UGE
EXISTING TELEPHONE/ FIBER LINE	UGT	UGT	UGT
EXISTING UNDERGROUND CABLE	UGC	UGC	UGC
EXISTING STORM DRAIN	18" SD	18" SD	18" SD
EXISTING WATER LINE	12" W	12" W	12" W
EXISTING GAS LINE	2" G	2" G	2" G
PROP. SAN. SWR. LINE	8" SS	8" SS	8" SS
EXISTING EASEMENT	---	---	---
PROPOSED EASEMENT	---	---	---
EFFECTIVE FLOOD PLAIN	---	---	---
PROPOSED BORE PIT	---	---	---
CITY LIMITS	---	---	---

Kimley»Horn
Texas Registered Firm, No. 928
601 NW Loop 410 Suite 350 San Antonio, TX 78216
Tel No. 210-541-9166 Fax No. 210-541-8699
03/18/2021

No.	Revision	By	Date
1	ADDENDUM #3	VRS	04/27/2021

SAN ANTONIO WATER SYSTEM
W2 HUEBNER CREEK: ECKHERT TO BANDERA
SHEET
LINE A 36-INCH PLAN AND PROFILE STA. 60+00 - 64+00

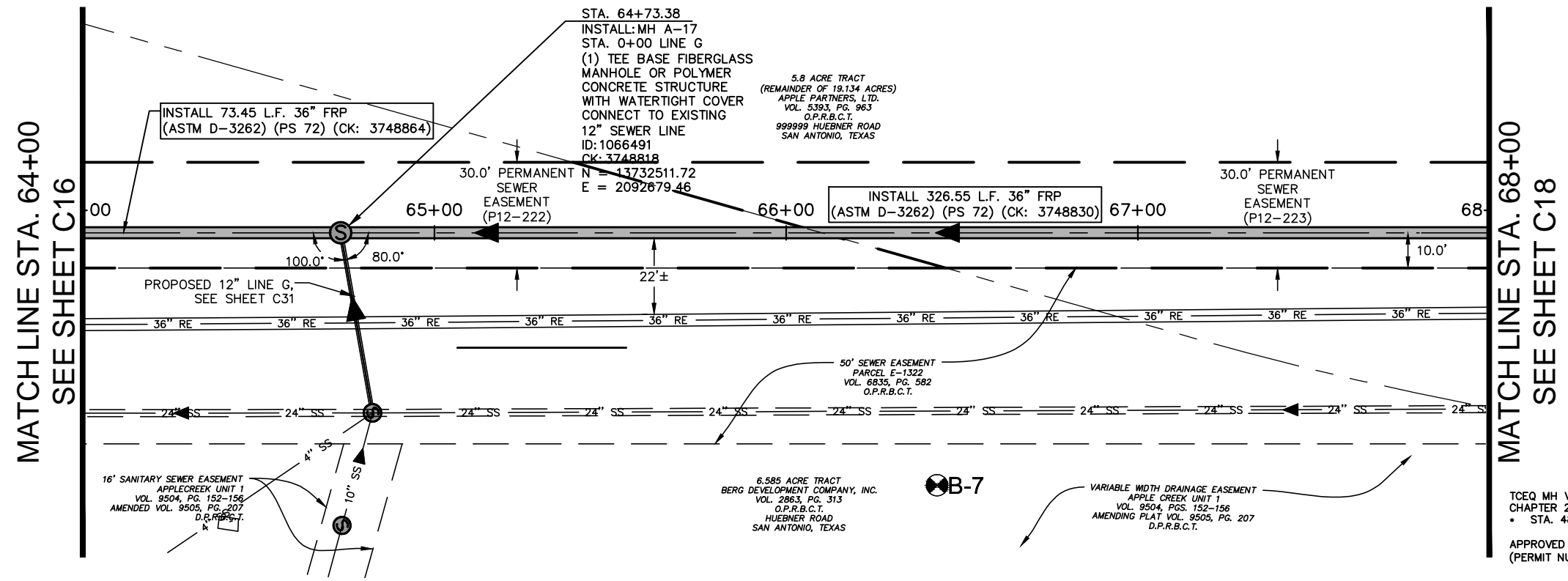
DATE:	SAWS PROJECT NO.	SHEET NO.
MARCH 2021	15-4513	C16
DESIGN: VRS	KHA PROJECT NO.	
DRAWN: RKC	068665009	
CHECKED: JAF		

K:\SNA_Utility\068665009\CAD\SHEETS\Paper_Main\16.dwg



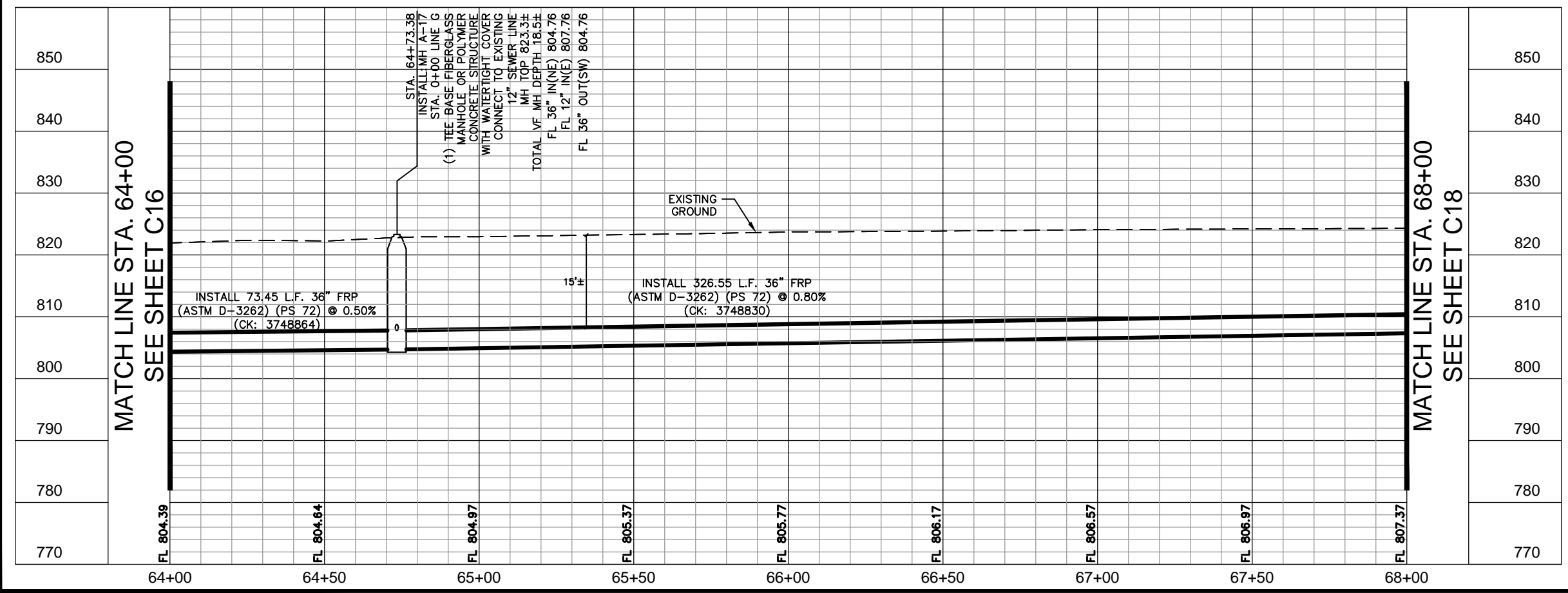
GRAPHIC SCALE 20'
FULL SIZE 1" = 20'
HALF SIZE 1" = 40'

ENTIRE SEGMENT ON THIS SHEET WITHIN 100-YR FLOODPLAIN



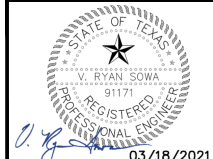
ESTIMATED QUANTITIES			
ITEM NO.	DESCRIPTION	UNIT	QUANTITY
413.1	FLOWABLE FILL (LOW STRENGTH)	CY	157
550.1	TRENCH EXCAVATION SAFETY PROTECTION	LF	400
853A SP850	FIBER-REINFORCED SANITARY SEWER MANHOLE - TEE BASE FIBERGLASS MANHOLE, MITER OR POLYMER CONCRETE SANITARY SEWER STRUCTURE - 6' DIAMETER	EA	1
853A	FIBER-REINFORCED SANITARY SEWER MANHOLE - TEE BASE FIBERGLASS MANHOLE, MITER, EXTRA DEPTH (>6')	VF	13
857A	36-INCH FRP (ASTM D-3262) (PS 72) SANITARY SEWER LINE (14' TO 18')	LF	304
857A	36-INCH FRP (ASTM D-3262) (PS 72) SANITARY SEWER LINE (18' TO 22')	LF	96

TCEQ MH VENT SPACING VARIANCE PER CHAPTER 217.55
• STA. 48+52 TO 74+11
APPROVED BY SAWS ON 10/16/2018 (PERMIT NUMBER: WQ0010137008)



LEGEND
FULL SIZE (22" x 34") 1" = 10' VERTICAL
HALF SIZE (11" x 17") 1" = 20' VERTICAL

PROPERTY LINE	---	PROP. SAN. SWR. LINE	—S—
EXISTING SAN. SWR.	—SS—	EXISTING EASEMENT	---
EXISTING RECYCLE MAIN	—36" RE—	PROPOSED EASEMENT	---
EXISTING OVERHEAD ELEC. LINE & PP	—OHE—	EFFECTIVE FLOOD PLAIN	---
EXISTING UNDERGROUND ELEC. LINE	—UGE—	PROPOSED BORE PIT	—X—
EXISTING TELEPHONE/FIBER LINE	—UGT—		
EXISTING UNDERGROUND CABLE	—UGC—		
EXISTING STORM DRAIN	—SD—		
EXISTING WATER LINE	—W—		
EXISTING GAS LINE	—G—		



Kimley»Horn
Texas Registered Firm, No. 928
601 NW Loop 410 Suite 350 San Antonio, TX 78216
Tel No. 210-541-9166 Fax No. 210-541-8699

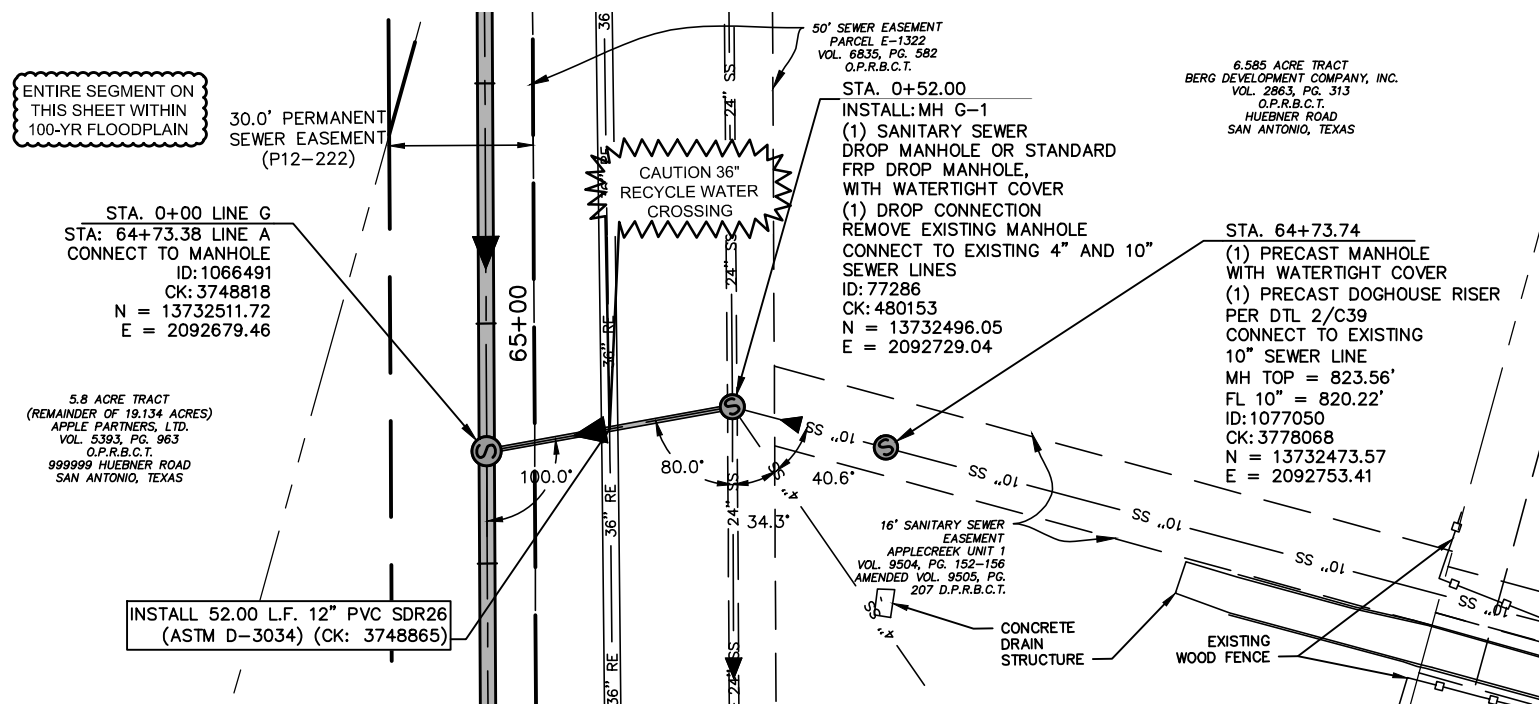
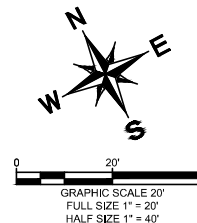
No.	Revision	By	Date
▲	ADDENDUM #3	VRS	04/27/2021



W2 HUEBNER CREEK: ECKHART TO BANDERA
SHEET
LINE A 36-INCH PLAN AND PROFILE STA. 64+00 - 68+00

DATE: MARCH 2021	SAWS PROJECT NO. 15-4513	SHEET NO. C17
DESIGN: VRS	KHA PROJECT NO. 068665009	
DRAWN: RKC		
CHECKED: JAF		

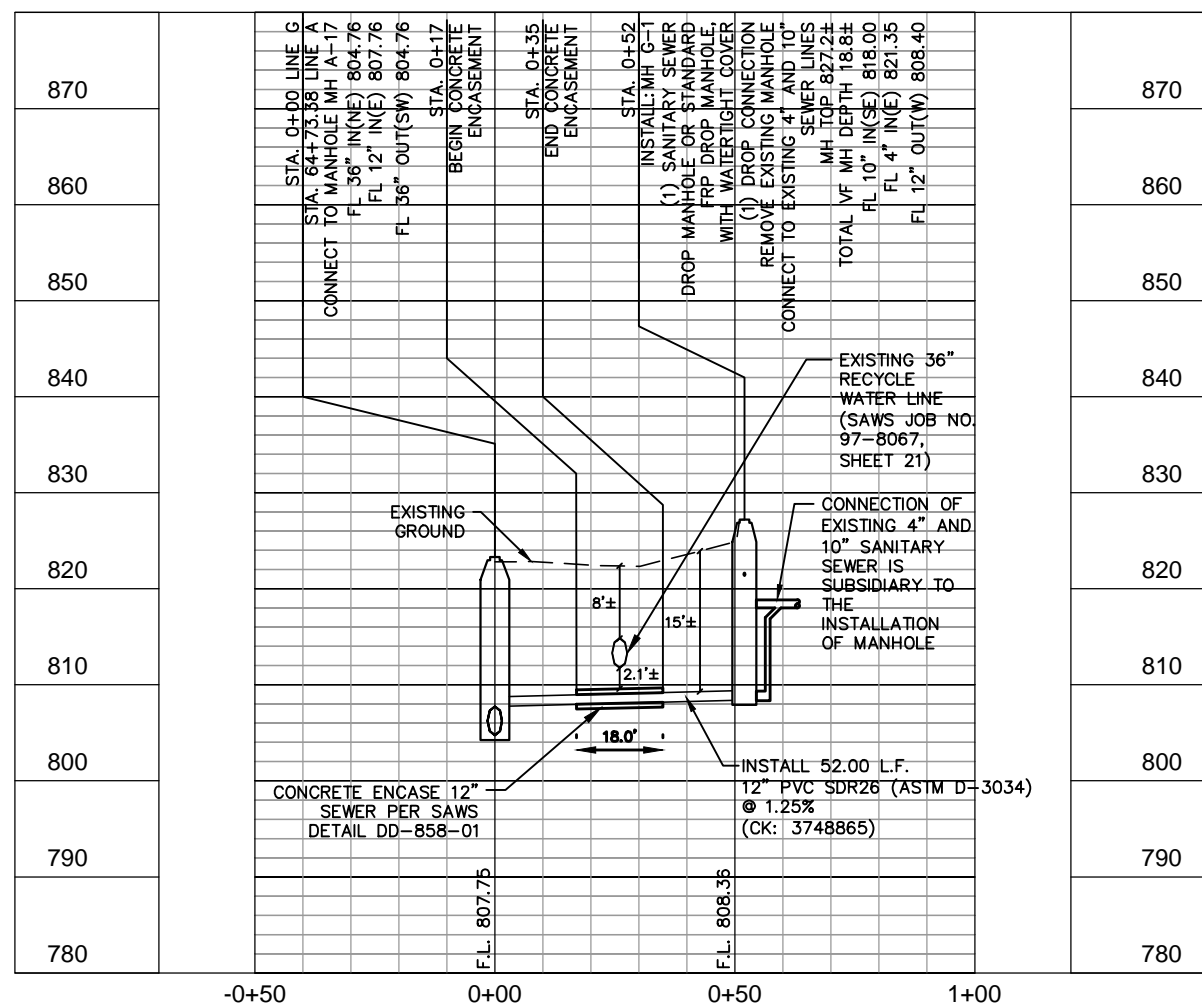
K:\SNA_Utility\068665009\068665009.dwg SHEETS\2-P&P_MomN4.dwg



ESTIMATED QUANTITIES			
ITEM NO.	DESCRIPTION	UNIT	QUANTITY
413.1	FLOWABLE FILL (LOW STRENGTH)	CY	12
550.1	TRENCH EXCAVATION SAFETY PROTECTION	LF	52
848A	12-INCH SDR-26 (ASTM D-3034) PVC SANITARY SEWER LINE (14' TO 18')	LF	52
852A	SANITARY SEWER DOGHOUSE MANHOLE	EA	1
852A	SANITARY SEWER DROP MANHOLE FIBER-REINFORCED SANITARY SEWER MANHOLE - 4' DIAMETER	EA	1
853A	FIBERGLASS MANHOLE W/ DROP		
852A	EXTRA DEPTH DROP MANHOLE (>6') FIBER-REINFORCED SANITARY SEWER MANHOLE - 4' DIAMETER	VF	13
853A	FIBERGLASS MANHOLE W/ DROP, EXTRA DEPTH (>6')		
858	CONCRETE ENCASEMENT, CRADLES, SADDLES, AND COLLARS	CY	4
866	SEWER MAIN POST TELEVISION INSPECTION (8" THROUGH 15")	LF	52
SP820A	CSC PIPE JOINT INSPECTION	EA	1

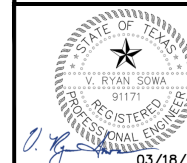
GENERAL NOTES:

- CONTRACTOR TO SUBMIT SHOP DRAWINGS DETAILING BEDDING PROTECTION AND BRACING OF EXISTING UTILITIES BEING CROSSED OR ENCRANCHING NEAR THE PROPOSED SEWER MAIN FOR REVIEW AND APPROVAL BY SAWS AND THE ENGINEER. THIS INCLUDES BUT IS NOT LIMITED TO ALL 21-INCH AND 24-INCH CLAY, CONCRETE, PVC SEWER MAINS, 36-INCH RECYCLE WATER MAINS, AND 24-INCH CONCRETE WATER MAINS. THIS WORK IS SUBSIDIARY TO THE SEWER PIPE INSTALLATION PAY ITEM.



LEGEND

FULL SIZE (22" x 34")		HALF SIZE (11" x 17")	
1" = 10' VERTICAL		1" = 20' VERTICAL	
PROPERTY LINE	---	8" SS	PROP. SAN. SWR. LINE
EXISTING SAN. SWR.	---	36" RE	EXISTING EASEMENT
EXISTING RECYCLE MAIN	---	OHE	PROPOSED EASEMENT
EXISTING OVERHEAD ELEC. LINE & PP	---	UGE	EFFECTIVE FLOOD PLAIN
EXISTING UNDERGROUND ELEC. LINE	---	UGT	PROPOSED BORE PIT
EXISTING TELEPHONE/ FIBER LINE	---	UGC	
EXISTING UNDERGROUND CABLE	---	18" SD	
EXISTING STORM DRAIN	---	12" W	
EXISTING WATER LINE	---	2" G	
EXISTING GAS LINE	---		



Kimley»Horn
 Texas Registered Firm, No. 928
 601 NW Loop 410 Suite 350
 San Antonio, TX 78216
 Tel No. 210-541-9166
 Fax No. 210-541-8699

No.	Revision	By	Date
▲	ADDENDUM #3	VRS	04/27/2021



**W2 HUEBNER CREEK:
 ECKHART TO BANDERA**
 SHEET
**LINE G 12-INCH
 PLAN AND PROFILE
 STA. 0+00 - END**

DATE: MARCH 2021	SAWS PROJECT NO. 15-4513	SHEET NO. C31
DESIGN: VRS	KHA PROJECT NO. 068665009	
DRAWN: RKC		
CHECKED: JAF		